



IDENTIFYING BUTTERFLIES

Join the Academy of Natural Sciences for the City Nature Challenge, April 30 to May 3.

JOIN US FOR THE CITY NATURE CHALLENGE

The City Nature Challenge is a friendly competition where people from more than 300 cities compete to see who can record the most wildlife. You can join us by documenting the plants and animals you find. Ask a grown-up to help you upload your observations to iNaturalist and use the guide on the next page to help identify common butterflies.

For help finding and taking photos of butterflies, see the tips below provided by Academy entomologists (scientists who study insects).

PHOTOGRAPHING BUTTERFLIES

Finding butterflies in nature can be even more fun when you take photos to share with your friends or upload to iNaturalist to help scientists. Our Academy entomologists have shared these useful tips to find butterflies and take great photos of the specimens you see.

Finding butterflies:

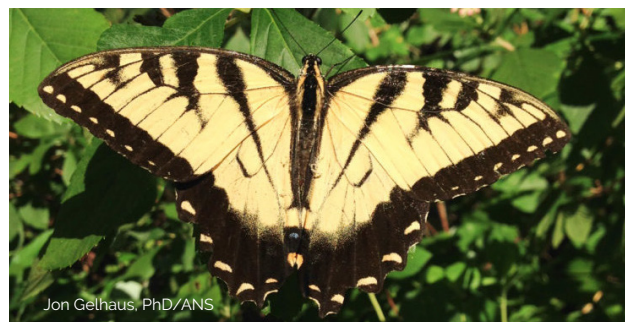
- Go outside! You can find butterflies almost anywhere outdoors
- Go out on a sunny day
- Look for flowers that offer nectar
- Plant native flowers in your outdoor space
- If possible, create diverse habitats: open sunny areas, shaded areas or even wild, weedy areas



Isa S. Betancourt/ANS

Photographing butterflies:

- Take the first photo from a distance — the butterfly may fly away as you approach
- Be mindful of your shadow — the change in light will scare the butterfly
- Focus the butterfly's eye for a great photo
- Try different camera angles
- If possible, use a selfie stick to get closer



Jon Gelhaus, PhD/ANS

BUTTERFLY IDENTIFICATION

As you spot butterflies, use this page to identify some of the most commonly found spring butterflies around Philadelphia. Don't forget to ask a grown-up to help you upload your photos to iNaturalist — your observations can help scientists!



Cabbage White
(*Pieris rapae*)



Falcate Orangetip
(*Anthocharis midea*)



Question Mark
(*Polygonia interrogationis*)



Comma
(*Polygonia comma*)



Mourning Cloak
(*Nymphalis antiopa*)



Brown Elfin
(*Callophrys augustinus*)



Pine Elfin
(*Callophrys niphon*)



Eastern Tiger Swallowtail
(*Papilio glaucus*)



Zebra Swallowtail
(*Eurytides marcellus*)



The Academy of
Natural Sciences
of DREXEL UNIVERSITY

Museum Hours (effective May 1)
Thursday–Sunday: 10 a.m.–5 p.m.
Members-only Hour: 9–10 a.m.

1900 Benjamin Franklin Parkway
Philadelphia, PA 19103
215-299-1022

ANSP.ORG